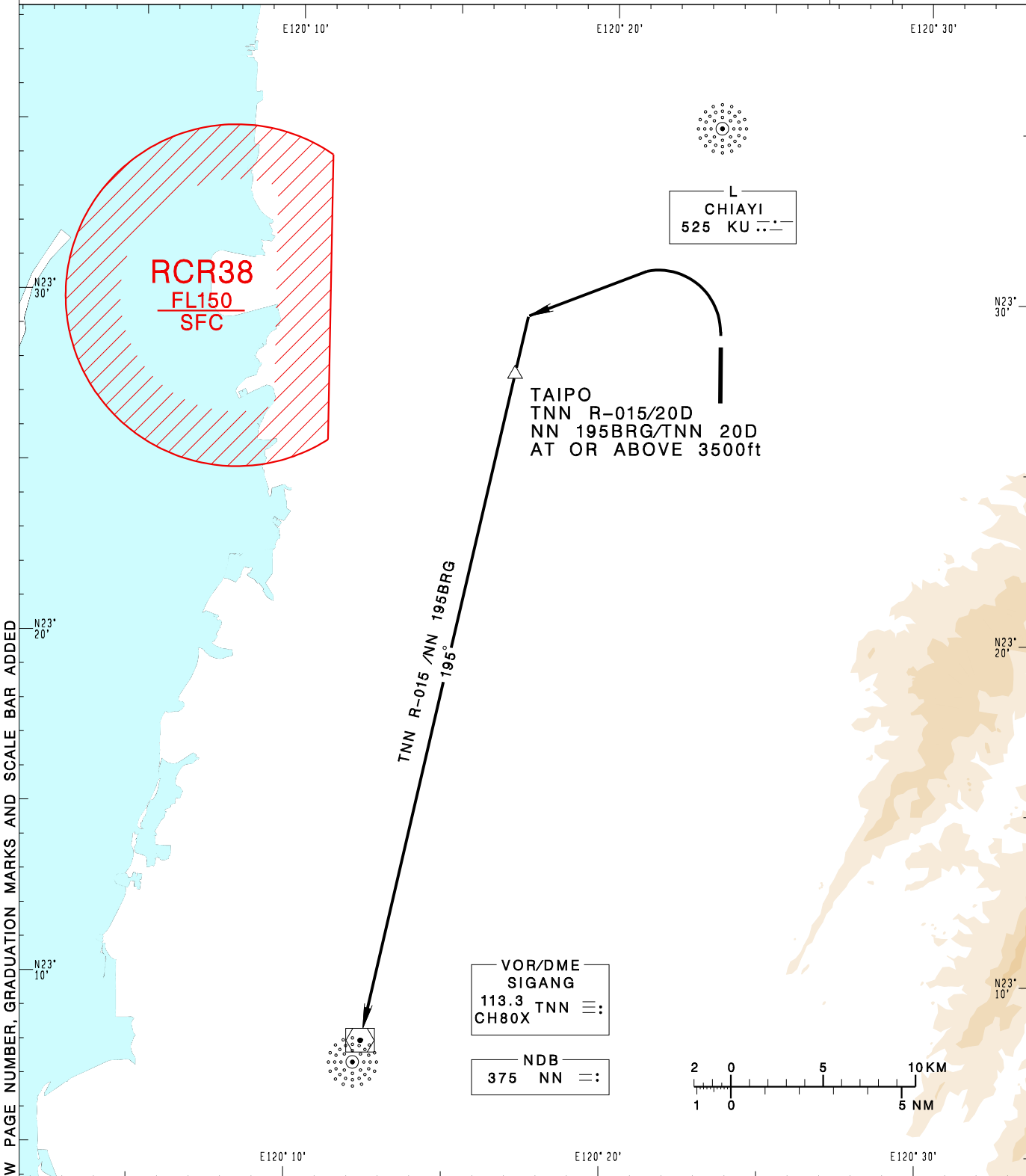


嘉義機場
CHIAYI AD

**RCKU SID
TAIPO 1**

KAOHSIUNG APP 120.6 301.0	CHIAYI TWR 118.6 236.6 275.8	VAR 3° W MSA KU 25NM
Apt Elev: 85'	Trans Level: FL130	
BEARINGS ARE MAGNETIC; DISTANCES ARE NAUTICAL MILES; ELEVATIONS, HEIGHTS IN FEET		



CHANGES: NEW PAGE NUMBER, GRADUATION MARKS AND SCALE BAR ADDED

TAIPO ONE DEPARTURE
After departure, turn left to track TNN R-015/NN 195BRG to TAIPO then TNN/NN to join airway, cross TAIPO at or above 3,500ft.

- NOTE**
- Requires a minimum climb gradient of 5.3% (325ft/NM) until 800ft.
 - No early turn before DER.
 - ATS surveillance required when RCR38 in use.